

Print Certificate



GIA REPORT
2171502105

Verify this report at gia.edu

FACSIMILE

This is a digital representation of the original GIA Report. This representation might not be accepted in lieu of the original GIA Report in certain circumstances. The original GIA Report includes certain security features which are not reproducible on this facsimile.

GIA DIAMOND GRADING REPORT

March 01, 2016
GIA Report Number 2171502105
Shape and Cutting Style Cut-Cornered Rectangular
Modified Brilliant
Measurements 8.13 x 7.03 x 4.22 mm

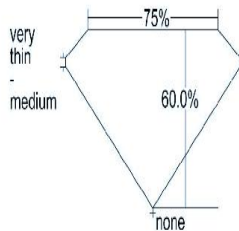
GRADING RESULTS

Carat Weight 2.07 carat
Color Grade H
Clarity Grade VS2

ADDITIONAL GRADING INFORMATION

Polish Very Good
Symmetry Good
Fluorescence None
Comments: Additional clouds are not shown. Pinpoints are not shown.

PROPORTIONS

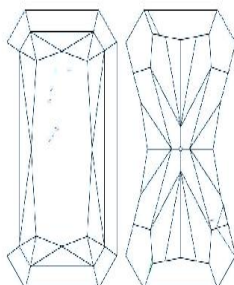


Profile not to actual proportions

GRADING SCALES

GIA COLOR SCALE		GIA CLARITY SCALE		
EXCELLENCE	D	FLAWLESS	FLAWLESS	
	E			
	F			
	VERY GOOD	G	INTERNALLY FLAWLESS	VS ₁
		H		
		I		
	GOOD	J	VS ₂	SI ₁
		K		
		L		
	FAIR	M	SI ₂	I ₁
N				
O				
POOR	P	SI ₁	I ₂	
	Q			
	R			
LIGHT	S	I ₃	I ₃	
	T			
	U			
	V			
	W			
	X			
	Y			
	Z			

CLARITY CHARACTERISTICS



KEY TO SYMBOLS*

- Cloud ^ Extra Facet
- \\ Needle
- \\ Feather
- ▲ Natural



reportcheck.gia.edu

The results documented in this report refer only to the diamond described, and were obtained using the techniques and equipment used by GIA at the time of examination. This report is not a guarantee or valuation. For additional information and important limitations and disclaimers, please see www.gia.edu/terms or call +1 800 421 7250 or +1 760 403 4500. ©2014 Gemological Institute of America, Inc.



* Red symbols denote internal characteristics (inclusions). Green or black symbols denote external characteristics (blemishes). Diagram is an approximate representation of the diamond, and symbols shown indicate type, position, and approximate size of clarity characteristics. All clarity characteristics may not be shown. Details of finish are not shown.

THE SECURITY FEATURES IN THIS DOCUMENT, INCLUDING THE HOLOGRAM, SECURITY SCREEN AND MICROPINT LINES, IN ADDITION TO THOSE NOT LISTED, EXCEED DOCUMENT SECURITY INDUSTRY GUIDELINES.